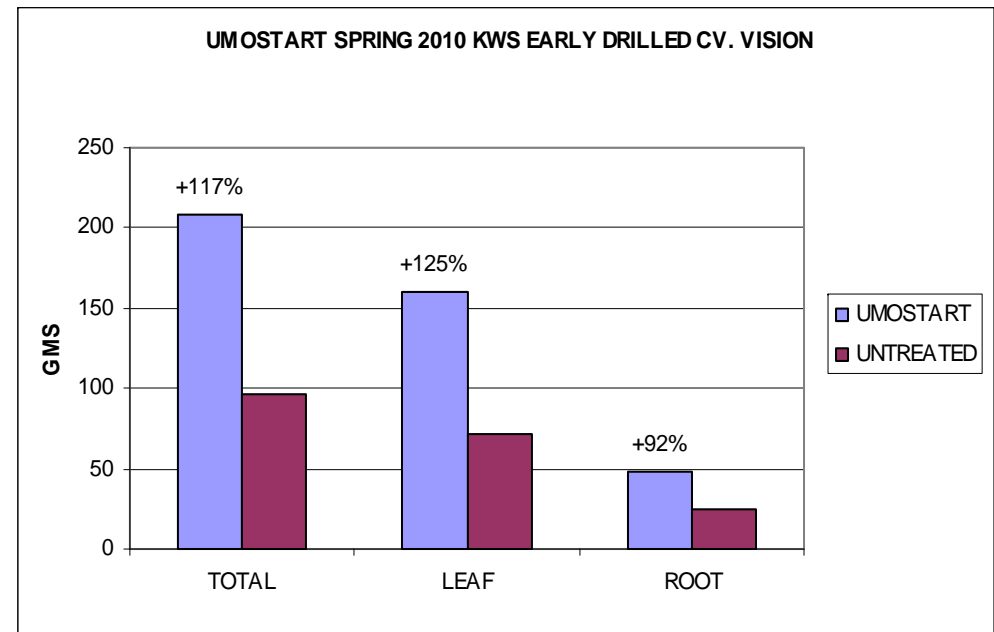
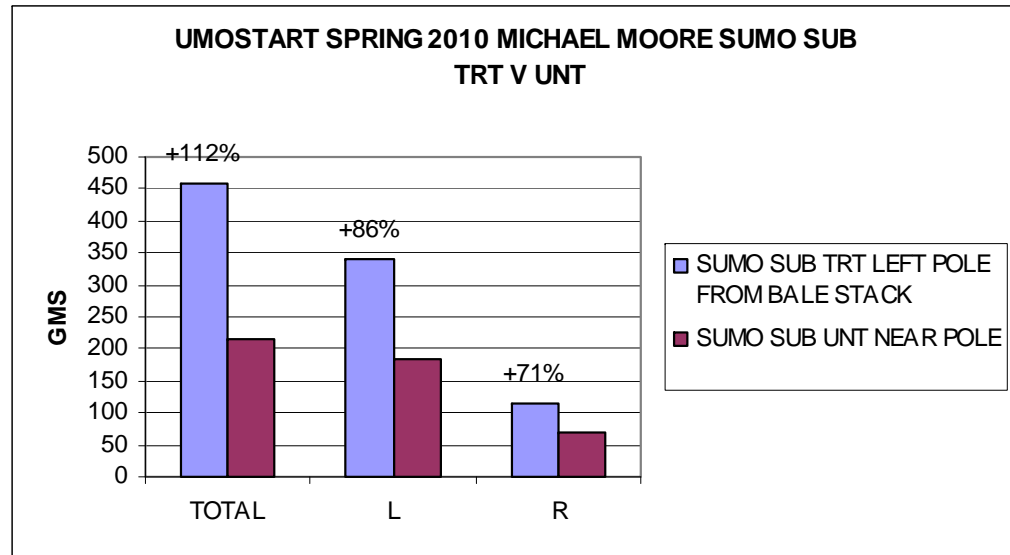


# UMOSTART KWS & FMR TRIALS SPRING 2010



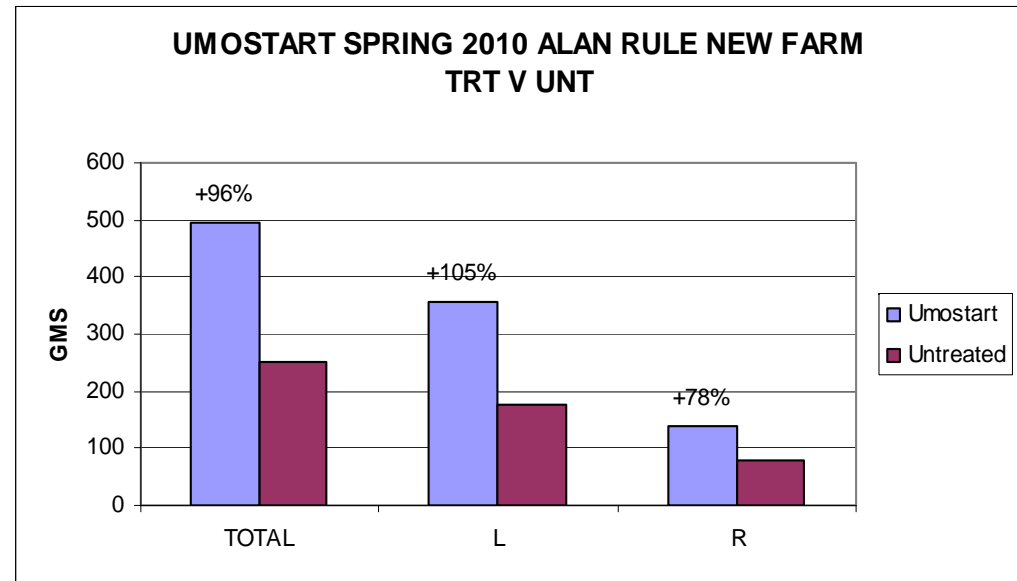
VISION	TOTAL	LEAF	ROOT
TRT	208	160	48
UNT	96	71	25
DIFF	112	89	23
% DIFF	+117%	+125%	+92%

# UMOSTART KWS & FMR TRIALS SPRING 2010 – MOORE SITE 2



SITE 2	TOTAL	LEAF	ROOT
TRT	458	342	116
UNT	216	184	68
DIFF	242	158	48
% DIFF	+112%	+86%	+71%

# UMOSTART KWS & FMR TRIALS SPRING 2010 – ALAN RULE NEW FARM



NEW FARM	TOTAL	LEAF	ROOT
TRT	495	358	137
UNT	252	175	77
DIFF	243	183	60
% DIFF	+96%	+105%	+78%